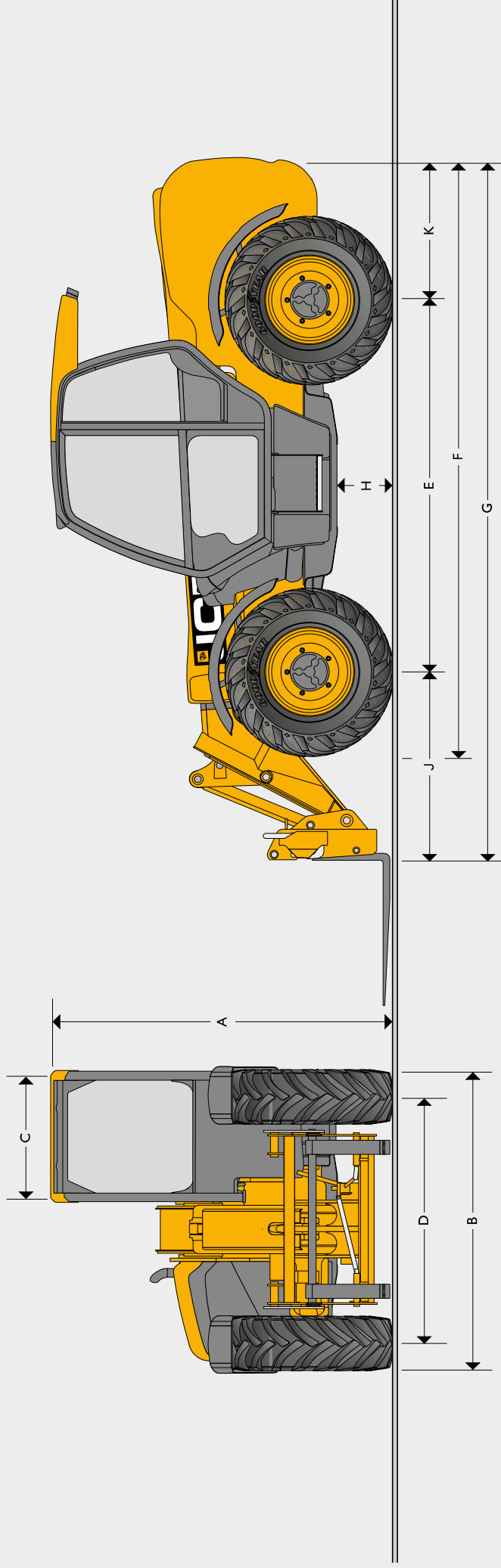


STATIC DIMENSIONS



STATIC DIMENSIONS

Machine model	531-70	541-70	535-95	533-105	535-125 HViz	540-140 HViz	540-170	540-180 HViz	540-200
A Overall height	m	2.49	2.49	2.49	2.59	2.59	2.69	2.59	2.72
B Overall length (over tyres)*	m	2.23	2.36	2.36	2.35	2.35	2.44	2.35	2.44
C Overall width (over tyres)	m	0.94	0.94	0.94	0.94	0.94	0.94	0.94	0.94
D Front track	m	1.81	1.87	1.87	1.90	1.90	1.90	1.90	1.97
E Wheelbase	m	2.75	2.75	2.75	2.75	2.75	2.75	2.75	2.75
F Overall length to front tyres	m	4.38	4.38	4.38	4.74	4.74	5.08	4.75	5.09
G Overall length to front carriage	m	4.99	4.99	4.99	5.38	5.38	6.36	6.27	6.81
H Ground clearance	m	0.40	0.40	0.40	0.40	0.40	0.40	0.40	0.41
I Front wheel centre to carriage	m	1.25	1.25	1.20	1.62	1.68	1.94	2.15	2.39
J Rear wheel centre to rear face	m	0.99	0.99	1.04	1.01	1.37	1.67	1.37	1.67
K Overall width with stabilisers fully deployed	m	NA	NA	2.63	2.57	2.57	3.55	3.39	3.82
Outside turn radius (over tyres)	m	3.7	3.7	3.7	3.7	3.75	4.10	3.75	4.1
Carriage rollback angle	degrees	42.6	42.6	41.0	37.0	37.0	39	36.50	39
Carriage dump angle	degrees	37.5	37.5	24.0	24.0	12.5	8.8	12.50	8.8
Weight	kg	7060	7850	8215	8850	10880	12060	11380	12985
Tyres	15.5/80-24	15.5/80-24	15.5/80-24	15.5/80-24	15.5/80-24	15.5/80-24	15.5/80-24	15.5-25	17.5-25

* Type dependent

LIFT PERFORMANCE

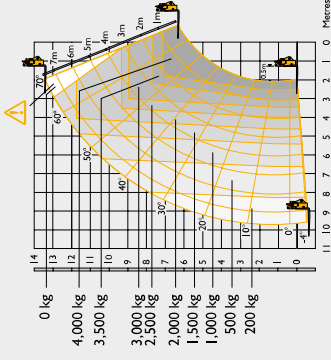
	531-70	541-70	535-95	535-95 Sway
Maximum lift capacity	3 100 kg	4 100 kg	3 500 kg	3 500 kg
Lift capacity at full height	2 400 kg	2 250 kg	1 600 kg	1 600 kg
Lift capacity at full reach	2 700 kg	1 500 kg	500 kg	500 kg
Lift height	7.0 m	7.0 m	9.50 m	9.50 m
Reach at maximum lift height	0.54 m	0.54 m	2.49 m	2.49 m
Maximum forward reach	3.7 m	3.7 m	6.52 m	6.52 m
Reach with 1 tonne load	3.7 m	3.7 m	5.08 m	5.08 m
Placing height	6.3 m	6.3 m	8.78 m	8.78 m
Complies with stability test EN 1459 Annex B, Chassis Levelling (Sway) with stabilisers retracted (Sway angle ±9°).				

LIFT PERFORMANCE

	533-105 Stabilisers retracted	533-105 Stabilisers extended	535-125 HViz Stabilisers retracted Sway	535-125 HViz Stabilisers extended Sway
Maximum lift capacity	3 300 kg	3 300 kg	3 500 kg	3 500 kg
Lift capacity at full height	1 000 kg	2 500 kg	1 500 kg	3 500 kg
Lift capacity at full reach	375 kg	1 000 kg	200 kg	1 350 kg
Lift height	10.22 m	10.22 m	11.6 m	12.27 m
Reach at maximum lift height	2.69 m	1.99 m	2.01 m	0.54 m
Maximum forward reach	6.83 m	6.83 m	8.06 m	8.06 m
Reach with 1 tonne load	6.83 m	6.83 m	5.31 m	8.06 m
Placing height	9.44 m	9.82 m	11 m	11.75 m
Complies with stability test EN 1459 Annex B, Chassis Levelling (Sway) with stabilisers retracted (Sway angle ±9°).				

LIFT PERFORMANCE

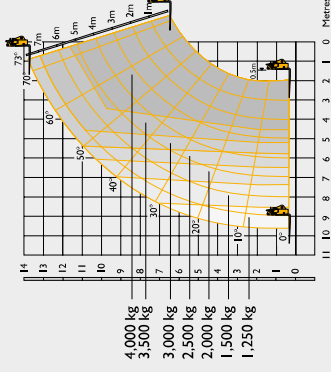
540-140 HIViz Stabilisers retracted Sway



Maximum lift capacity	kg	4000
Lift capacity to full height	kg	1500
Lift capacity at full reach	kg	200
Lift height	m	12.89
Reach at maximum lift height	m	3.09
Maximum forward reach	m	9.70
Reach with 1 tonne load	m	6.61
Placing height	m	12.40

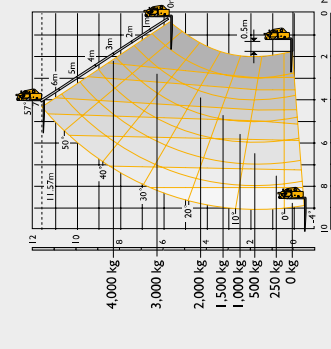
Complies with stability test EN 1459 Annex B. Chassis Levelling (Sway) with stabilisers retracted (Sway angle $\pm 9^\circ$).

540-140 HIViz Stabilisers extended Sway



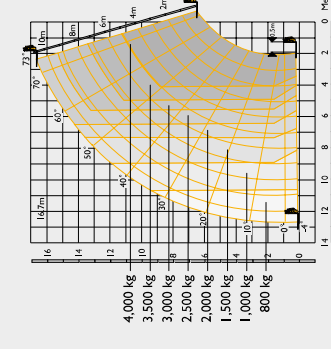
Maximum lift capacity	kg	4000
Lift capacity to full height	kg	3000
Lift capacity at full reach	kg	1250
Lift height	m	13.78
Reach at maximum lift height	m	1.01
Maximum forward reach	m	9.64
Reach with 1 tonne load	m	9.64
Placing height	m	13.30

540-170 Stabilisers retracted Sway



Maximum lift capacity	kg	4000
Lift capacity to full height	kg	1500
Lift capacity at full reach	kg	0
Lift height	m	11.57
Reach at maximum lift height	m	4.32
Maximum forward reach	m	9.04
Reach with 1 tonne load	m	5.76
Placing height	m	10.90

540-170 Stabilisers extended Sway

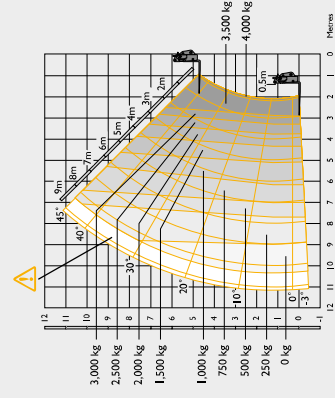


Maximum lift capacity	kg	4000
Lift capacity to full height	kg	2500
Lift capacity at full reach	kg	800
Lift height	m	16.7
Reach at maximum lift height	m	1.97
Maximum forward reach	m	12.50
Reach with 1 tonne load	m	11.70
Placing height	m	16.20

Complies with stability test EN 1459 Annex B. Chassis Levelling (Sway) with stabilisers retracted (Sway angle $\pm 9^\circ$).

LIFT PERFORMANCE

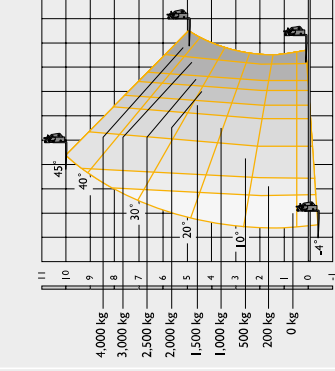
540-180 HIViz Stabilisers retracted Sway



Maximum lift capacity	kg	4000
Lift capacity to full height	kg	500
Lift capacity at full reach	kg	0
Lift height	m	10.69
Reach at maximum lift height	m	6.92
Maximum forward reach	m	10.47
Reach with 1 tonne load	m	6.25
Placing height	m	10.0

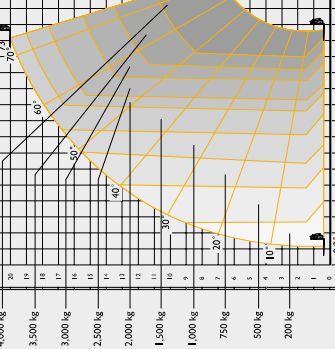
Complies with stability test EN 1459 Annex B. Chassis Levelling (Sway) with stabilisers retracted (Sway angle $\pm 9^\circ$).

540-200 Stabilisers retracted Sway



Maximum lift capacity	kg	4000
Lift capacity to full height	kg	500
Lift capacity at full reach	kg	0
Lift height	m	10.27
Reach at maximum lift height	m	6.42
Maximum forward reach	m	9.63
Reach with 1 tonne load	m	6.25
Placing height	m	9.1

540-200 Stabilisers extended Sway

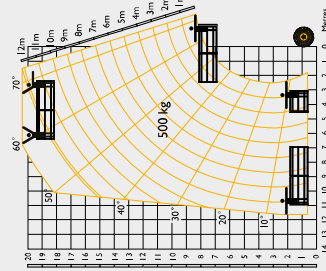
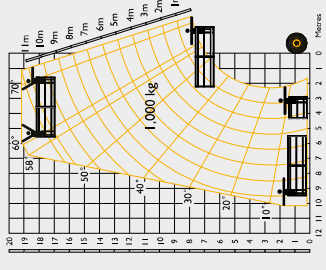
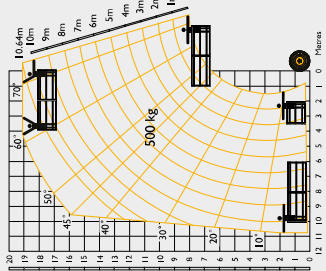
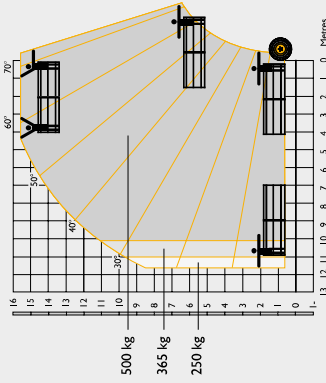


Maximum lift capacity	kg	4000
Lift capacity to full height	kg	1500
Lift capacity at full reach	kg	200
Lift height	m	20
Reach at maximum lift height	m	2.82
Maximum forward reach	m	15.9
Reach with 1 tonne load	m	10.65
Placing height	m	19.1

Complies with stability test EN 1459 Annex B. Chassis Levelling (Sway) with stabilisers retracted (Sway angle $\pm 9^\circ$).

LIFT PERFORMANCE

	540-140 HiViz Man platform Stabilisers extended	540-170 HiViz Man platform Stabilisers extended	540-180 HiViz Man platform Stabilisers extended	540-200 HiViz Man platform Stabilisers extended
Machine capacity	4000	4000	365kg basket 4000	500kg basket 4000
Personnel work height	15.6	19.09	19.25	19.25
Personnel work reach at maximum reach	11.75	11.75	13.16	12.17
Platform rated capacity	500	500	365	500
Capacity at full reach	365	500 @ 10.78m	365 @ 13.16m	500 @ 12.17m
Maximum forward reach (slewed platform)	11.14	10	12.5	11.5
Capacity to full working height	500	500	365	500
			500kg basket 4000	1000kg basket 4000



POINT LOADS

At maximum machine lift capacity (i.e. 4 tonne on a 540-170)

	531-70	541-70	535-95	533-105	535-125 HiViz	540-140 HiViz	540-170	540-180 HiViz	540-200
Load per front wheel	4731	5616	5540	5565	6365	6880	7541	6560	7723
Load per rear wheel	441	480	440	476	415	415	610	1131	730
Load per stabiliser	N/A	N/A	N/A	4188	5151	6010	5824	6243	5760
With no load on the forks and boom retracted in travel position									
Load per front wheel	1803	1847	1957	2312	2499	2484	2694	2608	2992
Load per rear wheel	1819	2200	2273	2078	2530	3060	3457	3462	3462